

# LUISA<sup>®</sup>

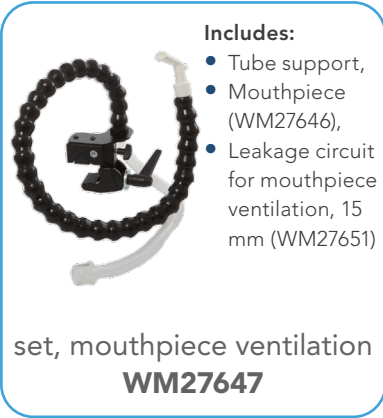
Life Supporting Ventilation  
with High Flow Oxygen Therapy

## PRODUCT CATALOG



IN PARTNERSHIP WITH

**LÖWENSTEIN**  
medical



**Includes:**

- Tube support,
- Mouthpiece (WM27646),
- Leakage circuit for mouthpiece ventilation, 15 mm (WM27651)

set, mouthpiece ventilation  
**WM27647**



Leakage circuit for mouth piece ventilation, 15 mm  
**WM27651**



Mouthpiece  
**WM27646**



SpO<sub>2</sub> sensor size S  
**LMT31580**



SpO<sub>2</sub> sensor size M  
**LMT31396**



SpO<sub>2</sub> sensor size L  
**LMT31388**



Set of 2, air filters/coarse dust filters  
**WM29928**



Set of 12, pollen filters/fine filters  
**WM29652**



oxygen connection nozzle  
**WM30669**



Bacteria and virus filter Teleflex Iso-Gard  
**WM27591**



Protection bag  
**LMT31417**



Mobility bag  
**LMT31554**



Expiration module, disposable  
**LMT31404**



FiO<sub>2</sub> measuring cell  
**LMT31502**



Connecting cable Xpod SpO<sub>2</sub> sensor  
**LMT31593**



LUIA accessories bag  
**LMT31440**



USB-C flash drive 32 GB  
**LMT31414**



External battery  
**LMT31540**



Charger for external battery  
**LMT31594US**



Power supply unit  
**LMT31569**

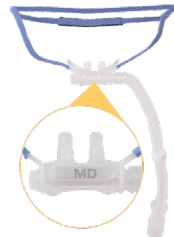


Power cord USA/CAN  
**WM27027**





Set of 10, High Flow Nasal Cannula Adult, size S  
**LMT29754**



Set of 10, High Flow Nasal Cannula Adult, size M  
**LMT29755**



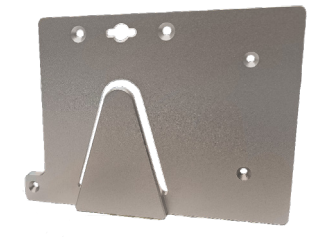
Set of 10, High Flow Nasal Cannula Adult, size L  
**LMT29756**



Trolley 2.0  
**LMT31355**



Set, LUISA device plate for trolley 2.0  
**LMT31359**



Set, LUISA plate for trolley 2.0  
**LMT31371**



Mounting bracket for ISO-rail  
**LMT31368**



Trolley Power Supply Clamp  
**LMT31351**



Trolley Oxygen Cylinder Clamp  
**LMT31352**



Trolley Hinged Circuit Arm  
**LMT31354**



Trolley Water Bag Holder  
**LMT31353**



LUISA with HFT mode  
Ventilation device type  
**LMT31390US-1110**

**Includes:**

- LUISA basic device (LMT31470)
- ex-piration module, disposable (LMT31404)
- Leakage circuit, 22 mm (LMA91113)
- Power supply (LMT31569)
- Power cord (WM27027)
- Oxygen connection nozzle (WM30669)
- Set of 12 pollen/fine filters (WM29652)
- Set of 2 air/coarse dust filters (WM29928)
- Protection bag (LMT31417)
- Accessories bag (LMT31440)
- USB flash drive (LMT31414)





# PARTNERSHIP FOR BETTER PATIENT CARE

With over 60 years combined experience in respiratory care, Movair and Lowenstein Medical have partnered to deliver high-quality ventilation to the United States. The Luisa non-invasive/invasive ventilator with High Flow Therapy is a 3<sup>rd</sup> generation life supporting ventilator that represents the highest standards in German and U.S. product development, engineering, and manufacturing.



Movair, formerly International Biophysics Corporation, innovator of the AffloVest has been in the cardiac surgery and respiratory market for 30 years. Based in Austin, Texas, Movair advances life-empowering respiratory technologies that help people breath better and live better.



Lowenstein Medical is a global market leader in respiratory care. They have been providing innovative solutions that improve the care of patients with over 30 years designing and manufacturing high performance ventilators used by patients ranging from neonatal to the elderly in over 130 countries worldwide.

## PROVIDING LIFE SUPPORT FOR 30 YEARS.

For more information, please visit [movair.com/LUISA](https://movair.com/LUISA)

The LUISA has been authorized by the FDA under an EUA but has not been FDA cleared or approved. The LUISA is authorized only for the duration of the declaration that circumstances exist justifying the authorization of the emergency use under section 564(b)(1) of the Act, 21 U.S.C. § 360bbb-3(b)(1), unless the authorization is terminated or revoked sooner. U.S. federal law restricts this device to sale by or on the order of a physician.